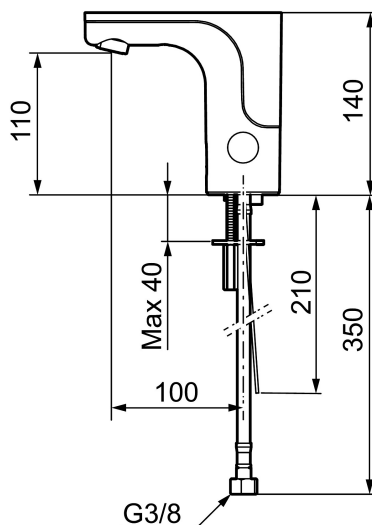
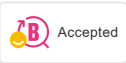


Description: Chrome, battery operation, included battery

- ### Unique characteristics



Installation:

- Note! Gateway and a subscription is required for WMS
- Automatic sensor calibration
- Easy to change battery, without turning off the water supply
- For mains operation requires installation of the adapter kit art.no. S600147

- Soft PEX[®] hose with integrated non return valves and filters (stainless steel braided)
- Hole diameter Ø33,5-37 mm

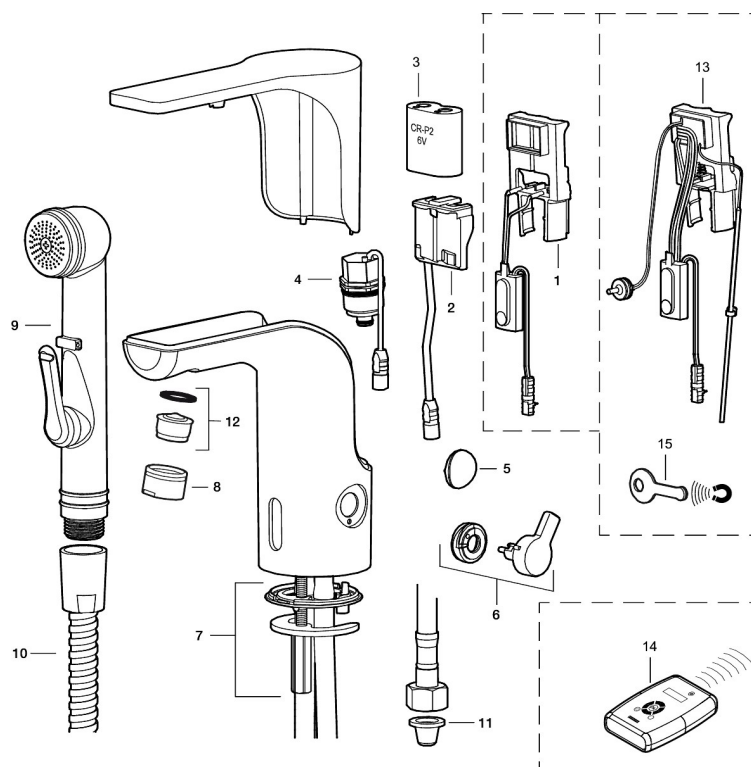
Settings:

- With Gateway and WMS:
 - Hygiene flushing with adjustable time and intervals
 - Initiate hot water rinsing
 - Programming of rinsing times, temperature alarm och temperature stops
 - Alert signal if exceeding the time limit for stagnant water (the latest flushing)

PRODUCT DESCRIPTION

MORA MMIX tronic WMS basin mixer, battery operation

Article number: 720086



Sparepartlist

| NO. | ART NO. | RSK | DESCRIPTION |
|-----|-----------|---------|--|
| 1 | S600278 | 8398041 | Electronic unit, Stand. |
| 1 | S600329 | 8398042 | Electronic unit, centrally controlled |
| 2 | S600131 | 8483190 | AC adapter |
| 3 | S600135 | 8483191 | Battery |
| 4 | S600277 | 8398040 | Solenoid valve |
| 5 | 729457.AE | 8553563 | Cover plug |
| 6 | 729456.AE | 8553562 | Lever, chrome |
| 7 | 729458.AE | 8553564 | Fastening |
| 8 | 131415.AE | 8281512 | Housing M24 utv., 15 mm, chrome |
| 9 | 729485.AE | 8184336 | Self-closing handshower |
| 10 | S600207 | 8236647 | Shower hose, L=1,5 m, chrome |
| 11 | 129296.AE | 8295327 | Filter kit Soft PEX 3/8 (2 pcs) |
| 12 | 132205.AE | 8281441 | Aerator insert, 5 l/min at 200–600 kPa |
| 13 | 729461.AE | 8483164 | Electronic unit, for WMS mixer |

| NO. | ART NO. | RSK | DESCRIPTION |
|-----|-----------|---------|----------------|
| 14 | 729480.AE | 8553570 | Remote control |
| 15 | S600150 | | Service magnet |