



MORA CERA W5 bath mixer

A bathroom is a place for relaxation, pleasure and recharging your batteries. So fill it with enjoyment. Save energy effortlessly, protect against fluctuations in water temperature, take an extra long shower with a clear conscience. Mora Cera puts quality time in your bathroom in countless ways.

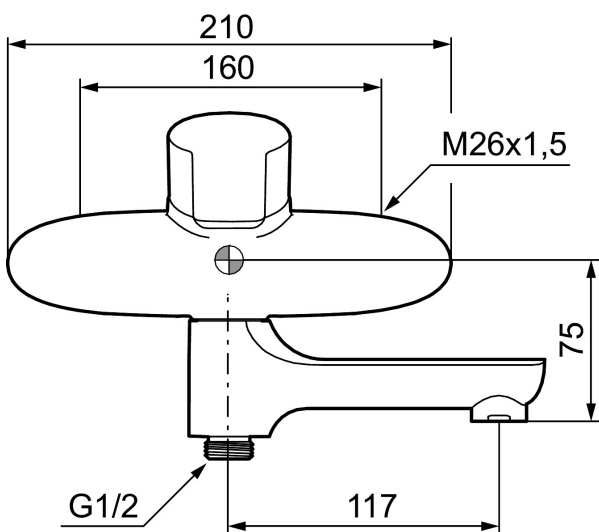
Article number: 250000

Description: Chrome, 160 c/c

- Swivel spout with built-in diverter
- Soft closing with ceramic cartridge
- Adjustable flow control and temperature limiter
- Approved non-return valves, EN-Standard EN1717

Unique characteristics

Backflow protection unit type 

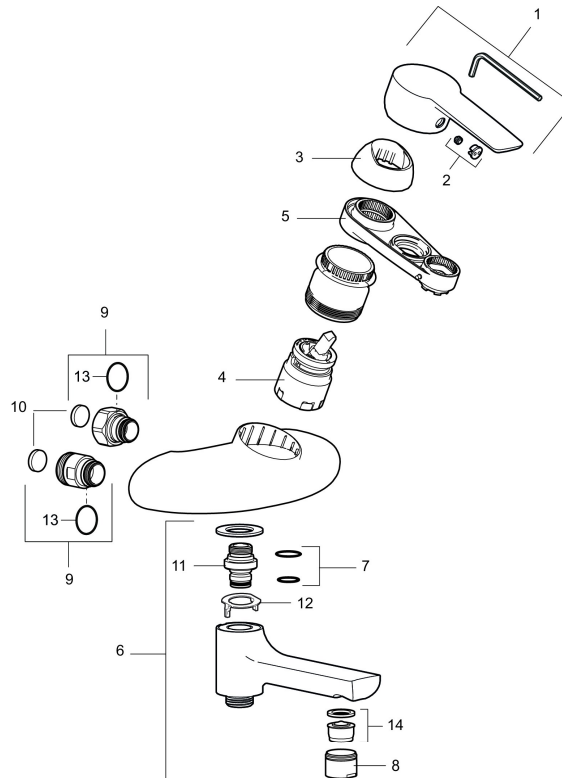


PRODUCT DESCRIPTION

MORA CERA W5 bath mixer

A bathroom is a place for relaxation, pleasure and recharging your batteries. So fill it with enjoyment. Save energy effortlessly, protect against fluctuations in water temperature, take an extra long shower with a clear conscience. Mora Cera puts quality time in your bathroom in countless ways.

Article number: 250000



Sparepartlist

| NO. | ART NO. | RSK | DESCRIPTION |
|-----|-----------|---------|---|
| 1 | 409600.AE | 8345186 | Lever, complete |
| 2 | 409392.AE | 8344866 | Colour marking and mounting screw for lever |
| 3 | 409410.AE | 8591986 | Cover nut |
| 4 | S600276 | 8387231 | Ceramic cartridge, incl. service tool, 20 l/min |
| 5 | S600298 | 3870203 | Service tool |
| 6 | 409656 | 8344876 | Swivel spout, for conversion of shower mixer to bath/shower mixer, chrome |
| 7 | 209519.AE | 8938340 | O-ring, for swivel spout |
| 8 | 131415.AE | 8281512 | Housing M24 utv., 15 mm, chrome |
| 9 | 409360.AA | 8187781 | Inlet connector 150 c/c (left-handed thread), retail packed |
| 9 | 409361.AE | 8228492 | Inlet connector 160 c/c |
| 10 | 409359.AA | 8345172 | Filter kit for connecting links, retail packed |

| NO. | ART NO. | RSK | DESCRIPTION |
|-----|-----------|---------|---|
| 11 | 409366.AE | | Nipple M18x1 with o-ring for bath mixer |
| 12 | 38521000 | 8295345 | Stop ring |
| 13 | 129131.AE | 8295316 | O-ring (18,1 x 1,6), 2 pcs |
| 14 | 139783.AE | 8281546 | Aerator inlet, 20–24 l/min at 300 kPa |