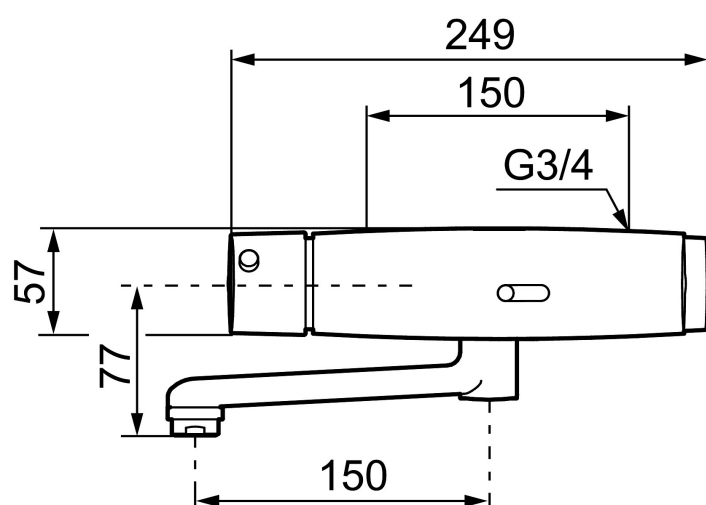




Unique characteristics



MORA tronic WMS, hospital mixer, battery operation

Article number: 720315.DB **Flow 3 bar:** 5.0 l/m

Description: Chrome, incl. s-connection (2x701001)

- WMS-mixers with possibilities of wireless connection (subscription is required)
- Adjustable hygiene flushing, intervals and rinsing time (to avoid stagnant water)
- Logging of all flushings with point of time, water consumption and temperature for individual mixer or group of mixers (minimum, maximum and average values)
- Battery monitoring
- Built-in temperature measurements of mixed water temperature
- Programmable temperature stop, the mixer will turn off directly at set maximum temperature
- With thermostatic function
- Temperature handle with safety stop at 38°C
- Adjustable maximum temperature, pre-set to 42°C
- Soft closing solenoid valve
- Safe against vandalism, complete in metal
- Eco (energy and water saving constant flow aerator, 5 l/min at 200–600 kPa)
- With self-draining spout
- The mixer is activated by holding a hand in front of the sensor eye. Once started the mixer will run for 10 seconds, but can be turned off manually by holding a hand in front of the sensor again
- Flush Timeout - safety shut-off to prevent flooding, maximum of 30 seconds
- 30 sec. rinse time via sensor
- Can be turned off by solenoid valve (eg for cleaning)
- Low power consumption - Long life
- Equipped with system for thermal disinfection against legionella
- Battery operation, can be converted to mains operation
- IP class sensor, IP67

- Approved non-return valves, EN-Standard EN1717

Installation:

- Note! Gateway and a subscription is required for WMS
- Automatic sensor calibration
- Easy to change battery, without turning off the water supply
- Mains operation requires installation of the AC adapter art.no. S600132 and power supply art.no. S600129, alternatively transformer art.no. S600128

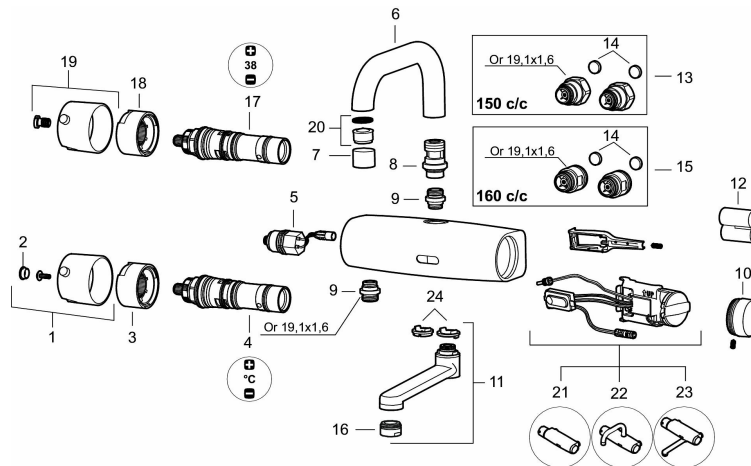
Settings:

- Adjustable max temperature
- With Gateway and WMS:
 - Hygiene flushing with adjustable time and intervals
 - Initiate hot water rinsing
 - Programming of rinsing times, temperature alarm och temperature stops
 - Alert signal if exceeding the time limit for stagnant water (the latest flushing)

PRODUCT DESCRIPTION

MORA tronic WMS, hospital mixer, battery operation

Article number: 720315.DB



Sparepartlist

| NO. | ART NO. | RSK | DESCRIPTION |
|-----|-----------|---------|--|
| 1 | 16221500 | 8438800 | On/off handle, complete (for basin mixer) |
| 2 | 39030000 | 8295347 | End cover, chrome, 2 pcs |
| 3 | 38525000 | 8218893 | Stop ring (for basin mixer) |
| 4 | 16280000 | 8483159 | Mixing valve (for basin mixer), Lead Free |
| 4 | 16280100 | | Mixing valve (for basin mixer) |
| 5 | S600277 | 8398040 | Solenoid valve |
| 6 | 58670000 | 8483157 | Spout, L=150 mm |
| 7 | 131410.AE | 8281509 | Housing M22 int. |
| 8 | 16292000 | 8483161 | Nipple |
| 9 | 409365.AE | 8187026 | Nipple M18x1 - G1/2 |
| 10 | 729459.AE | | Cover plug for battery, black |
| 11 | 459558 | | Spout |
| 12 | S600135 | 8483191 | Battery |
| 13 | 16291500 | 8438803 | Inlet connectors 150 c/c (left-handed thread) |
| 14 | 209604.AE | | Filters, 2 pcs |
| 15 | 16291600 | 8438804 | Inlet connectors 160 c/c |
| 16 | 131356.AE | 8281499 | Aerator M24 ext. |
| 17 | 729556 | | Thermostatic unit (for shower- and hospital mixer) |
| 18 | 38515000 | 8218894 | Stop ring (for shower- and hospital mixer) |

| NO. | ART NO. | RSK | DESCRIPTION |
|-----|-----------|---------|--|
| 19 | 16211500 | 8438808 | On/off handle, complete (for shower- and hospital mixer) |
| 20 | 132205.AE | 8281441 | Aerator insert, 5 l/min at 200–600 kPa |
| 21 | 729462.AE | | Electronic unit WMS (for shower mixer) |
| 22 | 16216300 | 8438813 | Electronic unit WMS (for mixer with overhead spout) |
| 23 | 16216400 | 8438814 | Electronic unit WMS (for mixer with underlying spout) |
| 24 | 58643000 | 8394022 | Limitation segment (for mixer with underlying spout) |