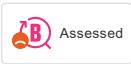
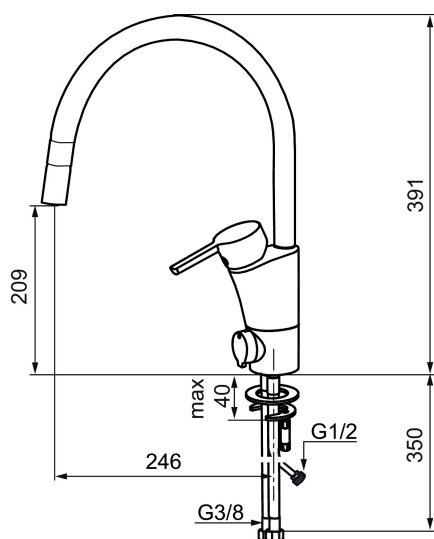




#### Unique characteristics



Backflow protection unit type



## MORA MMIX K5 kitchen mixer

Mora MMIX combines elegance and ergonomic design with energy-efficiency. Soft geometric curves and a timeless style characterise the entire Mora MMIX range. The mixers were developed according to our unique EcoSafe™ concept focusing on low energy consumption and long-term environmental care.

Article number: 732156 Flow 3 bar: 7.8 l/m

Description: Chrome

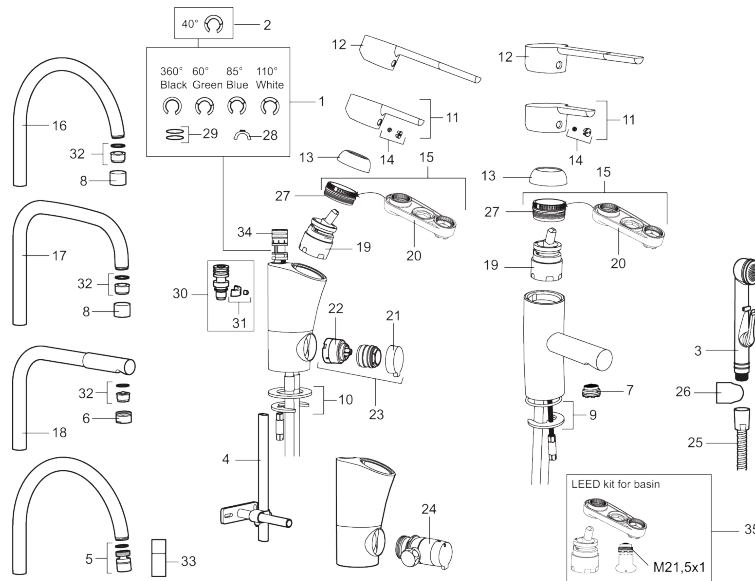
- ESS (energy saving system)
- Ceramic cartridge with soft closing function
- Adjustable flow control and temperature limiter
- Eco (energy and water saving aerator)
- Soft PEX® hoses with 3/8" connecting nut (stainless steel braided)
- Swivel spout, limitation part for 60°, 85°, 110° or 360° included
- With ball-jointed aerator
- With dishwasher valve, switchable between cold and hot water. Pre-set on cold water
- Lead Free material
- Hole diameter Ø32-37 mm

## PRODUCT DESCRIPTION

## MORA MMIX K5 kitchen mixer

Mora MMIX combines elegance and ergonomic design with energy-efficiency. Soft geometric curves and a timeless style characterise the entire Mora MMIX range. The mixers were developed according to our unique EcoSafe™ concept focusing on low energy consumption and long-term environmental care.

**Article number:** 732156



## Sparepartlist

| NO. | ART NO.   | RSK     | DESCRIPTION  |
|-----|-----------|---------|--|
| 1   | S600299   | 8387254 | Limitation segment                                 |
| 2   | 209543.AE | 8346916 | Limitation segment 40°                             |
| 3   | S600206   | 8233049 | Self-closing hand shower, chrome                   |
| 4   | S600308   | 8387263 | Stabilizer kit                                     |
| 5   | S600314   | 8280068 | Aerator M22 int., ball joint, 7–9 l/min at 300 kPa |
| 6   | 131415.AE | 8281512 | Housing M24 utv., 15 mm, chrome                    |
| 7   | S600312   | 8280067 | Aerator M21,5 ext., 7–9 l/min at 300 kPa           |
| 7   | 409385.AE | 8242292 | Aerator M21,5 ext., 5 l/min at 200–600 kPa         |
| 7   | S600228   |         | Aerator M21,5 ext., 3 l/min at 200–600 kPa         |
| 8   | 131410.AE | 8281509 | Housing M22 int.                                   |
| 9   | S600160   | 8387096 | Fastening kit, for basin mixer                     |
| 10  | S600159   | 8387097 | Fastening kit, for kitchen mixer                   |
| 11  | 409389.AE | 8344867 | Lever, complete                                    |
| 12  | 409390.AE | 8344874 | Care lever, complete, chrome                       |
| 13  | 409391.AE | 8344865 | Cover nut  |

| NO. | ART NO.   | RSK     | DESCRIPTION  |
|-----|-----------|---------|--|
| 14  | 409392.AE | 8344866 | Colour marking and mounting screw for lever                  |
| 15  | 409393.AE | 8345179 | Lock nut for cartridge, incl service tool                    |
| 16  | 409395.AE | 8326732 | Spout K5, complete   |
| 17  | 409396.AE | 8326733 | Spout K7, complete   |
| 18  | 409397.AE | 8326734 | Spout K6, complete   |
| 19  | S600273   | 8387230 | Ceramic cartridge with service tool, cold start (green ring) |
| 19  | 409405.AE | 8345205 | Ceramic cartridge, Turbo, incl service tool                  |
| 19  | S600232   |         | Cartridge, Low flow, for LEED mixers                         |
| 20  | S600298   | 3870203 | Service tool   |
| 21  | 409400.AE | 8345180 | Handle for dish washer connection                            |
| 22  | S600337   | 8346905 | Ceramic cartridge for dishwasher, with service tool          |
| 22  | S600316   | 8387265 | Ceramic cartridge for dishwasher, without service tool       |
| 23  | 409104.AE | 8322314 | Dishwasher isolator cartridge, incl. service tool            |
| 24  | 409399.AE | 8347223 | Rebuild.kit for dish washer                                  |
| 25  | S600207   | 8236647 | Shower hose, L=1,5 m, chrome                                 |
| 26  | 130732.AE | 8184186 | Wall bracket   |
| 27  | 439060.AE | 8295361 | Lock nut   |
| 28  | 309519.AE | 8295318 | Fixed plug, 2 pcs (black/grey)                               |
| 29  | 708843.AE | 8295357 | O-ring (15,54 x 2,62), 2 pcs                                 |
| 30  | 109016.AE | 8295331 | Spout nipple, complete, for fixed spout                      |
| 31  | 139595.AE | 8295313 | Stop screw with limitation segment                           |
| 32  | S600319   | 8280069 | Aerator insert, 7–9 l/min at 300 kPa                         |
| 32  | 131400.AE | 8281495 | Aerator insert, 11–15 l/min at 300 kPa                       |
| 32  | 132408.AE | 8281439 | Aerator insert, 8 l/min at 200–600 kPa                       |
| 33  | 409343.AE | 8281537 | Aerator M22 int., ball joint, 7–9 l/min at 300 kPa           |
| 34  | S600018   | 8394128 | Spout nipple, complete                                       |
| 35  | 131407.AE | 8281482 | LEED kit for basin mixer, 3 l/min at 200-600 kPa             |