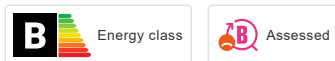
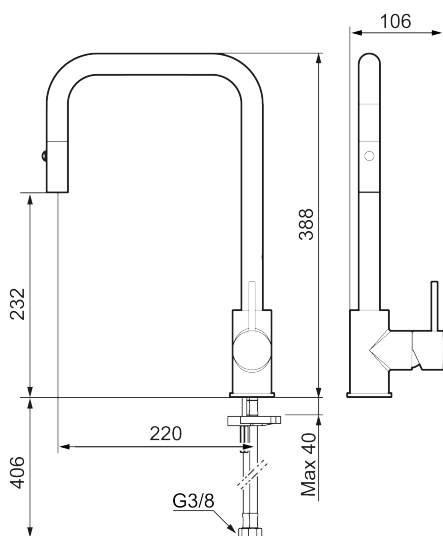


Unique characteristics



Backflow protection unit type **EB**

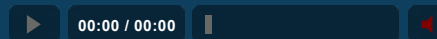


MORA INXX II pullout kitchen mixer

Featuring a durable chromed exterior and a contemporary form, INXX II pullout adds an elegant luxury to a kitchen.

The mixer has a pullout hand shower, easily switchable between a regular water stream and a shower – resetting itself to normal when the water is turned off.

It has an integrated dishwasher shut-off for easy peace of mind. This dishwasher shut-off is discreetly placed and electronically controlled, shutting off the water supply to the dishwasher 4 or 12 hours after activation.



Article number: 272041.CA **Flow 3 bar:** 6.0 l/m

Description: Chrome, with integrated electronic dish washer cut-off

- Pull out telescopic nozzle with two spray patterns (normal and rinse)
- Adjustable flow control and temperature limiter
- Soft PEX® hoses with 3/8" connecting nut (stainless steel braided)
- Swivel spout 130°, adaptable for different sinks
- With integrated electronic dish washer cut-off, automatic shut-off after 4 or 12 hours
- Approved non-return valves, EN-Standard EN1717
- Hole diameter Ø34-37 mm

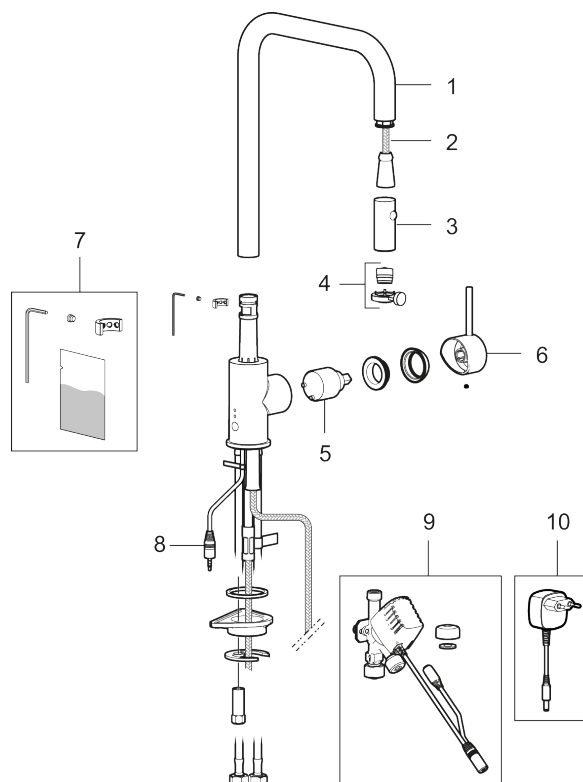
PRODUCT DESCRIPTION

MORA INXX II pullout kitchen mixer

Featuring a durable chromed exterior and a contemporary form, INXX II pullout adds an elegant luxury to a kitchen. The mixer has a pullout hand shower, easily switchable between a regular water stream and a shower – resetting itself to normal when the water is turned off. It has an integrated dishwasher shut-off for easy peace of mind. This dishwasher shut-off is discreetly placed and electronically controlled, shutting off the water supply to the dishwasher 4 or 12 hours after activation.



Article number: 272041.CA



Sparepartlist

| NO. | ART NO. | RSK | DESCRIPTION |
|-----|------------|---------|------------------------------|
| 1 | S600235 | 8387100 | Spout, complete, chrome |
| 1 | S600235.12 | 8387101 | Spout, complete, matte black |

| NO. | ART NO. | RSK | DESCRIPTION |
|-----|-------------|---------|------------------------------|
| 2 | S600189 | 8387146 | Hose |
| 3 | S600188 | 8387098 | Nozzle, chrome |
| 3 | S600188.12 | 8387099 | Nozzle, matte black |
| 4 | S600216 | 3871102 | Aerator insert with tool |
| 5 | S600268 | 8387259 | Ceramic cartridge |
| 6 | 409700.AE | 8394069 | Lever, complete, chrome |
| 6 | 409700.12AE | 8394070 | Lever, complete, matte black |
| 7 | S600213 | 8387148 | Limitation segment |
| 8 | S600224 | 8387147 | Sensor |
| 9 | S600184 | 8398014 | Electronic dishwasher valve |
| 10 | S600185 | 8398015 | Transformer 12V |