



MORA MMIX T5 care bath mixer

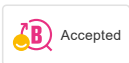
Ergonomic thermostatic mixer with “extra grip” handles and a heightened push button that easily can be manoeuvred with the palm of the hand. With a black TPE that gives extra contrast for visual disabilities and a softer feeling.

Also available in a lime green “limited edition”

Article number: 730102.0085

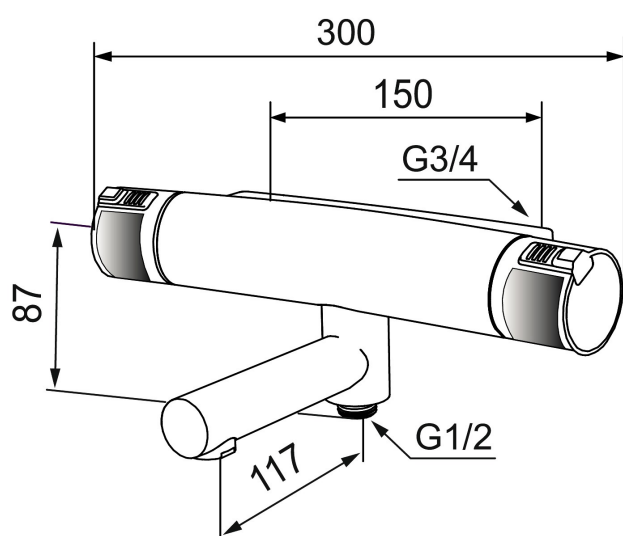
Description: Chrome/lime

Unique characteristics



- Swivel spout with built-in diverter
- Pressure balanced thermostatic mixer
- Temperature handle with safety stop at 38°C and 42°C
- With Eco-function
- Lead Free material
- Approved non-return valves, EN-Standard EN1717
- Extra user-friendly grips, approved by the Rheumatism Association in Sweden

Backflow protection unit type

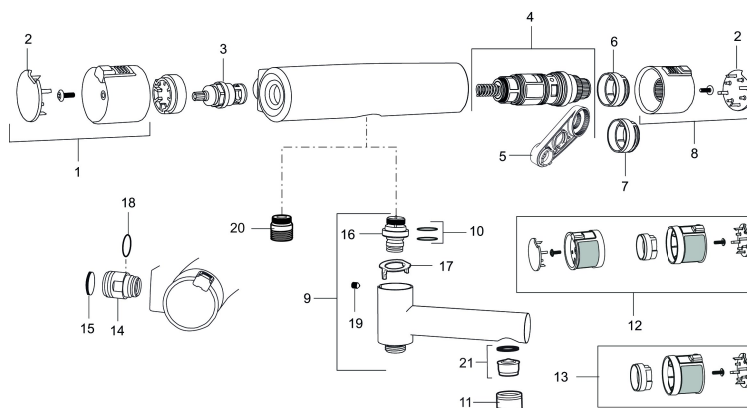


PRODUCT DESCRIPTION

MORA MMIX T5 care bath mixer

Ergonomic thermostatic mixer with “extra grip” handles and a heightened push button that easily can be manoeuvred with the palm of the hand. With a black TPE that gives extra contrast for visual disabilities and a softer feeling. Also available in a lime green “limited edition”

Article number: 730102.0085



Sparepartlist

| NO. | ART NO. | RSK | DESCRIPTION |
|-----|---------------|---------|---|
| 1 | 409353.AA | 8345088 | On/off handle, complete, chrome, retail packed |
| 1 | 409353.0011AA | 8345087 | On/off handle, complete, chrome/black, retail packed |
| 2 | 409358.AA | 8345089 | End cover, chrome, retail packed |
| 2 | 409358.0011AA | 8345090 | End cover, black, retail packed |
| 3 | S600274 | 8397028 | Ceramic headwork (G15) |
| 4 | S600275 | 8397029 | Thermostatic cartridge, complete, incl. service tool |
| 5 | S600298 | 3870203 | Service tool |
| 6 | S600311 | 8397045 | Scalding protection ring (standard), black |
| 7 | 409364.AE | 8346506 | Scalding protection ring, (max 42 °C) |
| 8 | 409352.AA | 8345086 | Temperature handle, complete, chrome, retail packed |
| 8 | 409352.0011AA | 8345085 | Temperature handle, complete, chrome/black, retail packed |
| 9 | 409356 | 8344853 | Swivel spout, for conversion of shower mixer to bath/shower mixer, chrome |
| 10 | 209519.AE | 8938340 | O-ring, for swivel spout |
| 11 | 131415.AE | 8281512 | Housing M24 utv., 15 mm, chrome |
| 12 | 409370.AA | 8345139 | Rebuild kit, care, black/chrome, retail packed |
| 12 | 409370.0085AA | 8345162 | Rebuild kit, care, lime/black, retail packed |
| 12 | 409370.0095AE | 8345210 | Rebuild kit, care, red/black |
| 13 | 409440.AE | 8345211 | Rebuild kit with fixed temp. stop, care, chrome |
| 14 | 409360.AA | 8187781 | Inlet connector 150 c/c (left-handed thread), retail packed |

| NO. | ART NO. | RSK | DESCRIPTION |
|-----|-----------|---------|--|
| 14 | 409361.AE | 8228492 | Inlet connector 160 c/c |
| 15 | 409359.AA | 8345172 | Filter kit for connecting links, retail packed |
| 16 | 409366.AE | | Nipple M18x1 with o-ring for bath mixer |
| 17 | 38521000 | 8295345 | Stop ring |
| 18 | 129131.AE | 8295316 | O-ring (18,1 x 1,6), 2 pcs |
| 19 | 708655.AE | 8295447 | Locking screw |
| 20 | 409365.AE | 8187026 | Nipple M18x1 - G1/2 |
| 21 | 139783.AE | 8281546 | Aerator inlet, 20–24 l/min at 300 kPa |