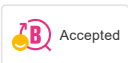




Unique characteristics



Backflow protection unit type



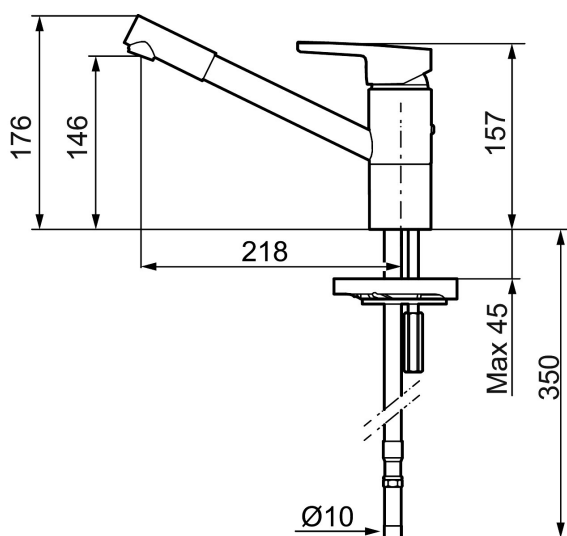
MORA MMIX K2 kitchen mixer

Mora MMIX combines elegance and ergonomic design with energy-efficiency. Soft geometric curves and a timeless style characterise the entire Mora MMIX range. The mixers were developed according to our unique EcoSafe™ concept focusing on low energy consumption and long-term environmental care.

Article number: 732200 **Flow 3 bar:** 9.5 l/m

Description: Chrome, connection flat end Ø10 mm

- ESS (energy saving system)
- Ceramic cartridge with soft closing function
- Adjustable flow control and temperature limiter
- Eco (energy and water saving aerator)
- Soft PEX® hoses (stainless steel braided)
- Swivel spout 110°
- Approved by the Rheumatism Association in Sweden
- Lead Free material
- Hole diameter Ø34-37 mm

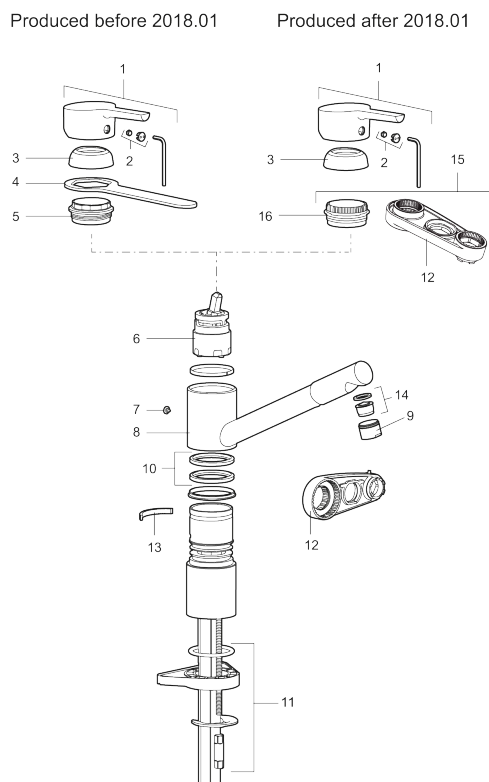


PRODUCT DESCRIPTION

MORA MMIX K2 kitchen mixer

Mora MMIX combines elegance and ergonomic design with energy-efficiency. Soft geometric curves and a timeless style characterise the entire Mora MMIX range. The mixers were developed according to our unique EcoSafe™ concept focusing on low energy consumption and long-term environmental care.

Article number: 732200



Sparepartlist

| NO. | ART NO. | RSK | DESCRIPTION |
|-----|-----------|---------|--|
| 1 | 409389.AE | 8344867 | Lever, complete |
| 2 | 409392.AE | 8344866 | Colour marking and mounting screw for lever |
| 3 | 409391.AE | 8344865 | Cover nut |
| 5 | 409610.AE | 8241743 | Lock nut for cartridge |
| 6 | S600273 | 8387230 | Ceramic cartridge with service tool, cold start (green ring) |
| 6 | 409405.AE | 8345205 | Ceramic cartridge, Turbo, incl service tool |
| 7 | 409611.AE | 8241744 | Stop screw |
| 8 | 409685 | 8242427 | Swivel spout, complete with jet concentrator |
| 9 | 131417.AE | 8281513 | Housing M24 ext., 17 mm |
| 10 | S600301 | 8387255 | Sealing rings, 2 pcs |
| 11 | 409457.AE | | Fastening details for mixers without on/off valve |
| 12 | S600298 | 3870203 | Service tool |

| NO. | ART NO. | RSK | DESCRIPTION |
|-----|-----------|---------|--|
| 13 | 209558.AE | 8346933 | Limitation clapm for fixed spout and swivel 30-90° |
| 14 | 131398.AE | 8281493 | Aerator insert, 9–11 l/min at 300 kPa |
| 15 | 409393.AE | 8345179 | Lock nut for cartridge, incl service tool |
| 16 | 439060.AE | 8295361 | Lock nut |