



## MMIX II shower mixer

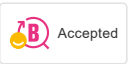
We have updated our classic MMIX chrome shower mixer with a straighter shape and a bolder look. The result? Superior function and elegant style!

Its interior has also been upgraded with an improved thermostat, providing optimal energy efficiency combined with an unsurpassable shower experience.

**Article number:** 331100 **Flow 3 bar:** 12.0 l/m

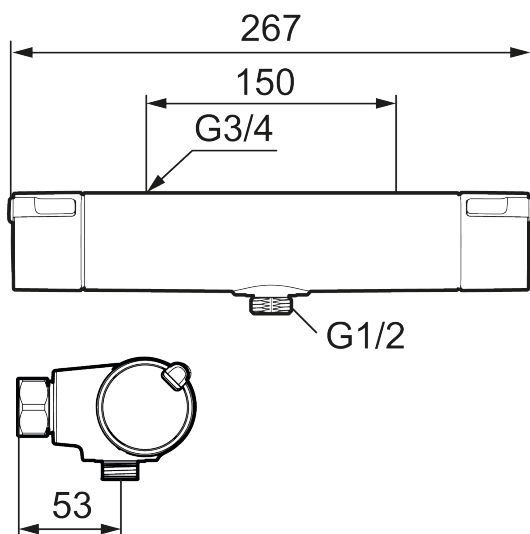
**Description:** Chrome, 150 c/c

### Unique characteristics



- With shower connection down
- Pressure balanced thermostatic mixer
- Temperature handle with safety stop at 38°C
- With Eco-function
- Lead Free material
- Approved non-return valves, EN-Standard EN1717

Backflow protection unit type



## PRODUCT DESCRIPTION

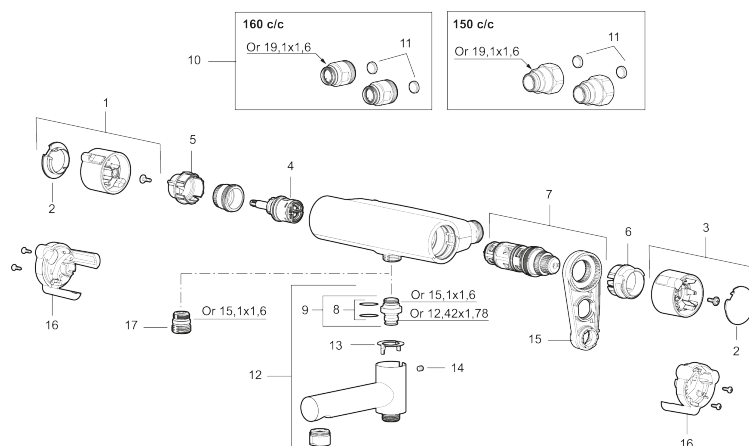
## MMIX II shower mixer

We have updated our classic MMIX chrome shower mixer with a straighter shape and a bolder look. The result?

**Superior function and elegant style!**

Its interior has also been upgraded with an improved thermostat, providing optimal energy efficiency combined with an unsurpassable shower experience.

**Article number:** 331100



## Sparepartlist

| NO. | ART NO.   | RSK     | DESCRIPTION   |
|-----|-----------|---------|---|
| 1   | S600191   | 8397017 | On/off handle, complete, chrome   |
| 2   | S600192   | 8397019 | End cover, chrome, 2 pcs  |
| 3   | S600190   | 8397018 | Temperature handle, complete, chrome                                      |
| 4   | S600020   | 8441462 | Reversible headwork shower mixer 12 l/min, with service tool              |
| 4   | S600269   | 8387232 | Reversible headwork shower mixer 12 l/min                                 |
| 4   | S600021   | 8441463 | Reversible headwork bath mixer 22 l/min, with service tool                |
| 4   | S600270   | 8387233 | Reversible headwork bath mixer 22 l/min                                   |
| 5   | S600086   | 8439710 | Stop ring, standard   |
| 6   | S600087   | 8439711 | Scalding protection ring  |
| 6   | S600026   | 8439708 | Scalding protection ring, max 42 °C                                       |
| 7   | S600084   | 8439709 | Thermostatic cartridge, complete, incl. service tool                      |
| 7   | S600271   | 8397030 | Thermostatic cartridge, complete, without service tool                    |
| 8   | 209519.AE | 8938340 | O-ring, for swivel spout  |
| 9   | 409366.AE |         | Nipple M18x1 with o-ring for bath mixer                                   |
| 10  | 409361.AE | 8228492 | Inlet connector 160 c/c   |
| 11  | 409359.AA | 8345172 | Filter kit for connecting links, retail packed                            |
| 12  | 409356    | 8344853 | Swivel spout, for conversion of shower mixer to bath/shower mixer, chrome |

| NO. | ART NO.   | RSK     | DESCRIPTION                        |
|-----|-----------|---------|------------------------------------|
| 13  | 38521000  | 8295345 | Stop ring                          |
| 14  | 708655.AE | 8295447 | Locking screw                      |
| 15  | S600298   | 3870203 | Service tool                       |
| 16  | S600193   | 8397020 | Care-handle, black, 2 pcs          |
| 17  | S600088   | 8439712 | Nipple M18x1–G1/2 for shower mixer |