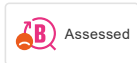
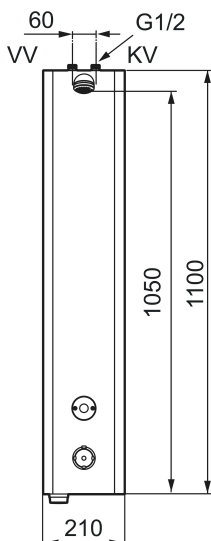


Unique characteristics



Backflow protection unit type **EB**



MORA tronic shower panel WMS, with thermostatic function, battery operation

Article number: 720172

Description: Battery operated, included battery

- Thermostatic function, with adjustable temperature
- Battery operation, can be converted to mains operation
- Connection up G1/2", included ball valve
- With solenoid valve and filter
- Programmable start button. Rinsing time from 10–60 seconds, (30 seconds is the factory preset)
- Flush Timeout - safety shut-off to prevent flooding, maximum of 5 minutes
- Jet angle adjustable +/- 5°
- Flow limiter 9 l/min
- Stainless look
- Can be turned off by solenoid valve (eg for cleaning)
- Low power consumption - Long life
- Equipped with system for thermal disinfection against legionella
- IP class sensor, IP67
- Approved non-return valves, EN-Standard EN1717

Installation:

- Easy to change battery under the service cover without turning off the water supply
- For mains operation different accessories are required:
 - Alternative 1: AC adapter art.no. S600132 and power supply art.no. S600129, alternatively transformer art.no. S600128, plus extension cable (5 m) art.no. S600127
 - Alternative 2: AC adapter art.no. S600132 and voltage distributor art.no. S600149, plus extension cable (10 m) art.no. S600148

Tronic WMS:

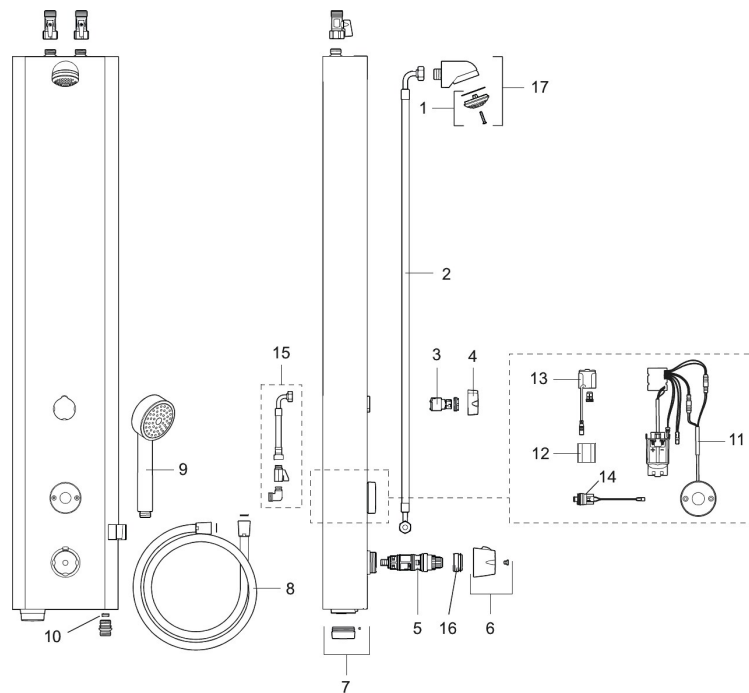
- Note! Gateway and subscription or dongle are required for the WMS function

- The following options are available with wireless connection to our Tronic WMS system:
- Programmable rinsing time from 10–60 seconds, (30 seconds is the factory preset)
- Selection of activation type:
 - Saving mode, set time, always flush at the same time, factory preset mode
 - Normal, rinsing time is extended if you press again before it stops
 - Switching mode, set time, reactivation interrupts flushing
- Adjustable hygiene flushing, interval and rinsing time (in order to prevent stagnant water)
- Logging of all flushings with point of time, water consumption and temperature for individual mixer or group of mixers (minimum, maximum and average values)
- Battery monitoring
- Built-in temperature measurements of mixed water temperature
- Programmable temperature stop, the mixer will turn off directly at set maximum temperature
- Initiate hot water rinsing

PRODUCT DESCRIPTION

MORA tronic shower panel WMS, with thermostatic function, battery operation

Article number: 720172



Sparepartlist

| NO. | ART NO. | RSK | DESCRIPTION |
|-----|-----------|---------|---|
| 1 | 729303.AE | 8126215 | Shower strainer |
| 2 | 729512.AE | | Connection hose, 0,7 m |
| 3 | 409417.AA | 8541628 | Cartridge for diverter |
| 4 | 729509.AE | | Handle for diverter |
| 5 | 409419.AE | 8938271 | Thermostatic cartridge, complete, with service tool |
| 6 | S600222 | 8239545 | Temperature handle, complete |
| 7 | 729459.AE | | Cover plug for battery, black |
| 8 | 139835.AE | 8199159 | Shower hose in metal, 1750 mm |
| 9 | 130361 | 8199196 | Hand shower |
| 10 | 729514.AE | | Flow limiter, constant flow 6 l/min at 200–600 kPa |
| 10 | 729511.AE | | Flow limiter, constant flow 9 l/min at 200–600 kPa |
| 10 | 729515.AE | | Flow limiter, constant flow 12 l/min at 200–600 kPa |
| 11 | 729465.AE | | Electronic unit |

| NO. | ART NO. | RSK | DESCRIPTION |
|-----|-----------|---------|---------------------------------------|
| 12 | S600135 | 8483191 | Battery |
| 13 | S600132 | 8438826 | AC adapter |
| 14 | 729510.AE | | Solenoid valve |
| 15 | 729513.AE | | Hose kit, connection behind |
| 16 | 409364.AE | 8346506 | Scalding protection ring, (max 42 °C) |
| 17 | S600025 | 8221869 | Shower head, complete |